



SKILL-A-THON INFORMATION

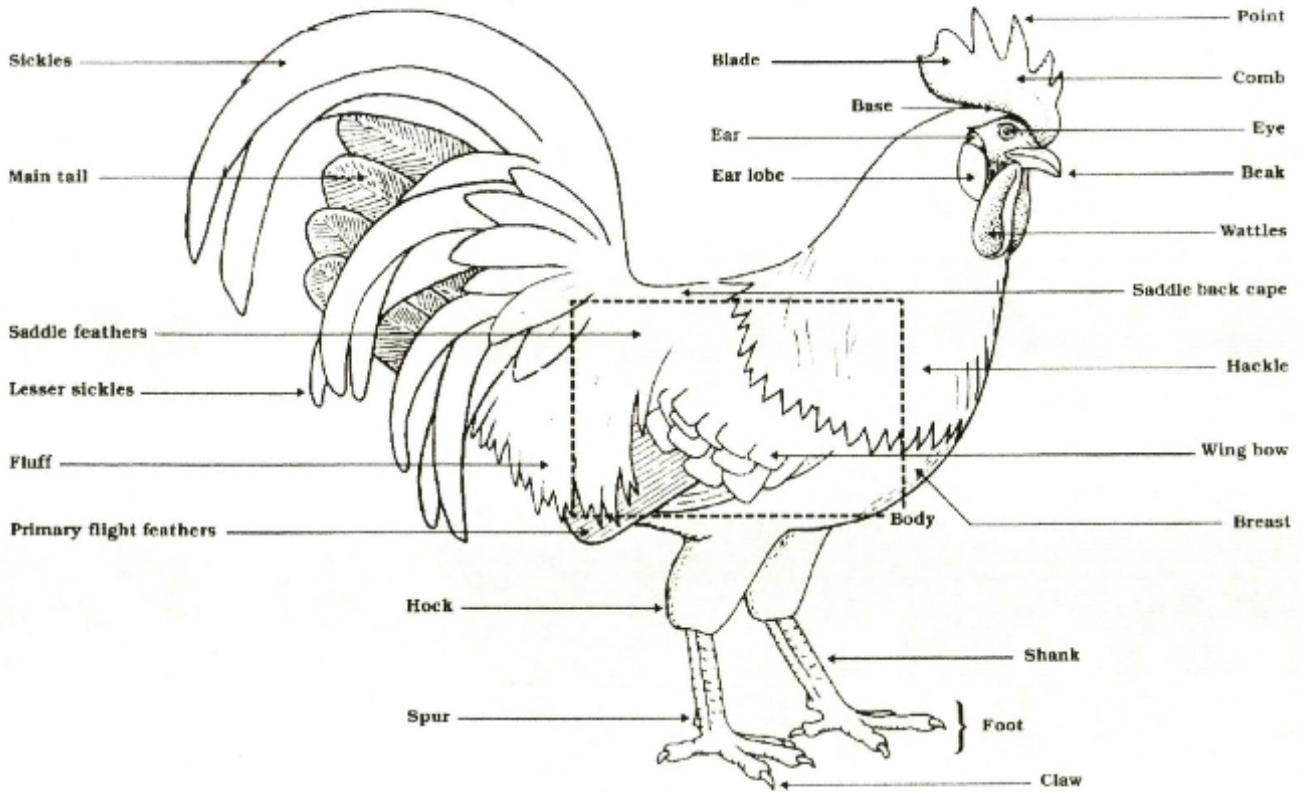
Please reference the chart below to use as a guideline on what to study for skill-a-thon this year. Additional handouts to study are included.

Junior (Ages 8-13) - Senior (Ages 14-19) - As of January 1st - This Year				
Species-Station	Projects	Station Topics		
CHICKEN JUNIOR	150CE-CHICKEN, EXHIBITION (FANCY) 50CM-CHICKEN, MARKET 150CEP-CHICKEN, EGG PRODUCTION; HENS AND PULLETS	Station 1	Parts of a Chicken (Cockerel/ Rooster)	Additional Handout
		Station 2	Medication Labels	Additional Handout
		Station 3	Feed Tags	Additional Handout
CHICKEN SENIOR	150CE-CHICKEN, EXHIBITION (FANCY) 50CM-CHICKEN, MARKET 150CEP-CHICKEN, EGG PRODUCTION; HENS AND PULLETS	Station 1	Parts of a Chicken (Hen)	Additional Handout
		Station 2	Identifying Comb Types in Poultry	Additional Handout
		Station 3	Feed Tags	Additional Handout

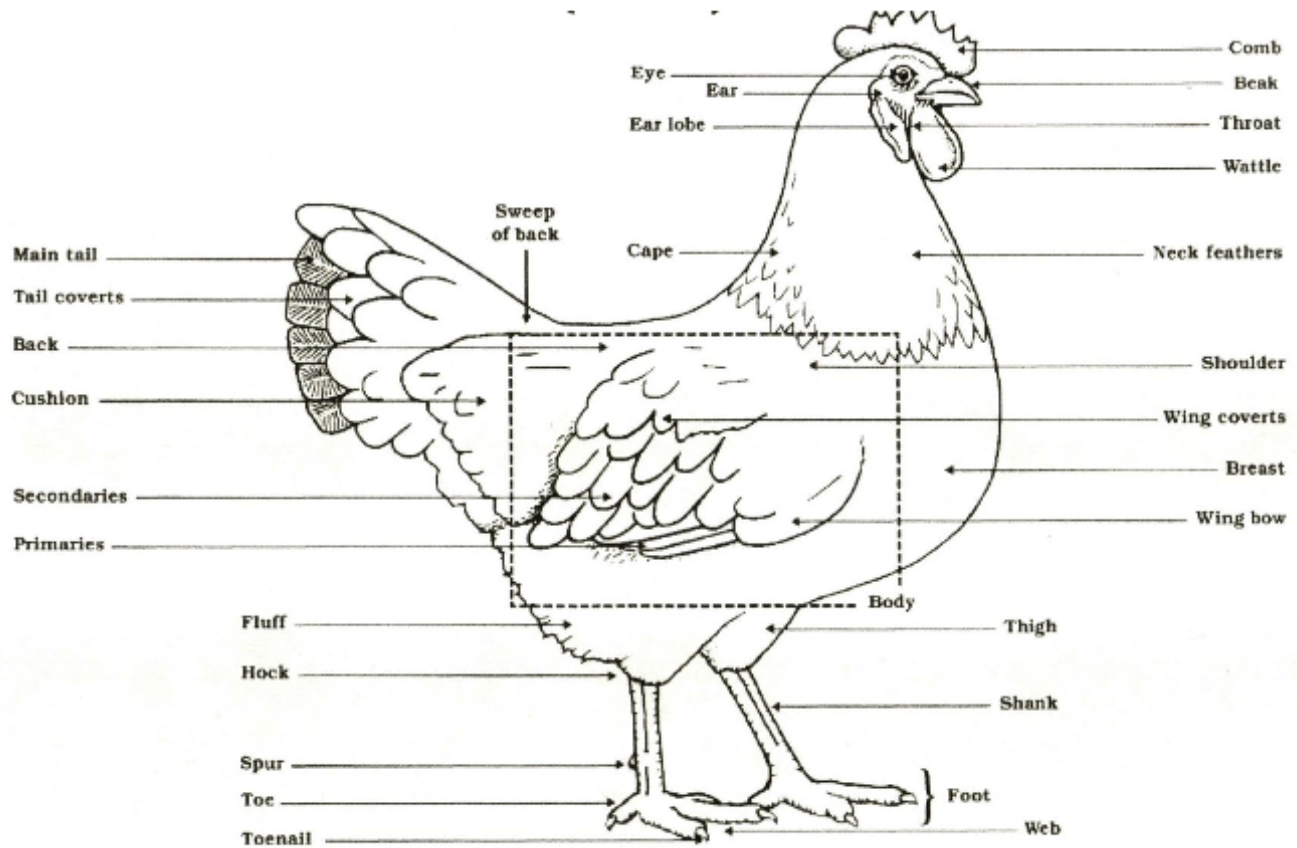
If you have any questions, please call the Belmont County Extension Office at (740) 695-1455.

POULTRY
SKILL-A-THON







Parts of a Cockerel/Rooster



Parts of a Hen



COMB IDENTIFICATION

 <p style="text-align: center;">Single Comb</p>	<p>SINGLE COMBS are the most common type of chicken comb. When people think of a chicken comb this is the one they think about. It is thinly shaped and has five or six serrations (points) on the comb that resemble mountains. The serrations tend to be smaller at the front and back of the comb and more pronounced in the middle of the comb. Although this comb is known to be upright it can be lopsided and floppy in hens. Both the Leghorns and Ayam Cemani have this comb type however the Ayam Cemani has a black comb.</p>
 <p style="text-align: center;">Rose Comb</p>	<p>ROSE COMBS are extremely flat and hug the head. This comb has many small bumps on it and ends in a spike like shape. Some breeds that have a rose comb include Wyandottes and Dominiques. Again because this is a small comb, chickens that have it are well suited to cold climates and are unlikely to get frostbite.</p>
 <p style="text-align: center;">Pea Comb</p>	<p>PEA COMBS are extremely small. They have three ridges with the middle ridge being slightly taller than the other two. Each of the ridges has tiny bumps on them for texture. Some of the most popular chicken breeds that have a pea comb include Brahmas and Ameraucanas. Due to its small size the pea comb is great for chickens living in cooler climates due to the fact that it is less likely to get frostbitten.</p>
 <p style="text-align: center;">Cushion Comb</p>	<p>THE CUSHION COMB is very small and low to the head. Unlike other combs that are bumpy and textured, this comb is very smooth. It looks like a little cushion sitting on top of the chicken's head. One of the most popular chickens to have a cushion comb is the Chantecler. Due to its small and compact size the cushion comb is excellent for chickens that live in colder climates because it helps to prevent frostbite and preserve body heat.</p>
 <p style="text-align: center;">Buttercup Comb</p>	<p>THE BUTTERCUP COMB looks like two single combs have been added together. Interestingly only one breed in the world has this comb: the Sicilian Buttercup. This comb type is great for chickens that live in warmer weather because the comb's shape helps the chicken to cool down quickly.</p>
 <p style="text-align: center;">Strawberry Comb</p>	<p>THE STRAWBERRY COMB is a flatter and low growing comb. It is called the strawberry comb because they look like strawberries. It curves forward slightly with the thickest part of the comb resting on the beak. The Malay breed is one of the most popular chickens with a strawberry comb.</p>

Feed Tag

Product Name

Purpose Statement

Active Ingredients

Guaranteed Analysis

List of Ingredients

Directions for Use

Warnings and Cautions

Manufacturer

TRUE-BLUE CHICK STARTER
Medicated Complete Crumbs for Chicks

True-blue Chick Starter is formulated for the development of active immunity to *Coccidiosis* and for increased rate of weight gain and improved feed efficiency in replacement chickens.

ACTIVE INGREDIENTS

Amprolium 113.5 g/lb
Bacitracin Methylene Disalicylate 10 g/lb

GUARANTEED ANALYSIS

Crude Protein	Min	18.00%
Lysine	Min	0.85%
Methionine	Min	0.25%
Crude Fat	Min	2.50%
Crude Fiber	Max	7.00%
Calcium	Min	0.75%
Calcium	Max	1.25%
Phosphorus	Min	0.70%
Salt	Min	0.25%
Salt	Max	0.75%

INGREDIENTS

Grain Products, Processed Grain By-Products, Plant Protein Products, dl-Methionine, Calcium Carbonate, Mono calcium Phosphate, Dicalcium Phosphate, Salt, Ferrous Carbonate, Ferrous Sulfate, Copper Sulfate, Manganese Oxide, Manganese Sulfate, Zinc Oxide, Zinc Sulfate, Cobalt Carbonate, Calcium Iodate, Sodium Selenite, Vitamin A supplement, Vitamin D3 supplement, Vitamin E Supplement, Menadione Sodium Bisulfite Complex, Menadione Dimethylpyridinol Bisulfite, Thiamine Mononitrate, Riboflavin Supplement, Niacin Supplement, Choline Chloride, Calcium Pantothenate, Pyridoxine Hydrochloride, Folic Acid, Biotin, Vitamin B12 Supplement.

FEEDING DIRECTIONS

Feed **True-Blue Chick Starter-Medicated** continuously as the sole ration to chicks from 0 to 8 weeks. Provide fresh, clean water free choice at all times.

CAUTION: Do not use amprolium in feeds containing bentonite

WARNING: Use as the sole source of amprolium

WARNING: Do not offer any feed that is spoiled, moldy, rodent-or insect-infested, or abnormal in appearance or odor, as it may cause illness or death

WARNING: This product contains supplemental copper. DO NOT feed to sheep or other copper-sensitive species

IMPORTANT: Feed is perishable. Store this product in a cool, dry area away from rodents and insects.

TRUE-BLUE FEED COMPANY
Lexington, KY

Medication Label

Trade Name of Drug

Carramycin-152
(oxytetracycline HCl)

Active Ingredients

DIRECTIONS FOR USE:

See package indications and directions for use.

Cautions and Warnings

Warning: The use of this drug must be discontinued for 5 days before treated animals are slaughtered for food. Exceeding the highest recommended dosage level may result in antibiotic residues in meat beyond the withdrawal time.

Withholding Times

Store below 77°F (25°C).

Keep dry and keep away from light.

Storage

Quantity of Contents

Net contents: 4.78 oz. packet

Distributed by

Livestock Health, Inc.

Name of Distributor