



**SKILL-A-THON INFORMATION**

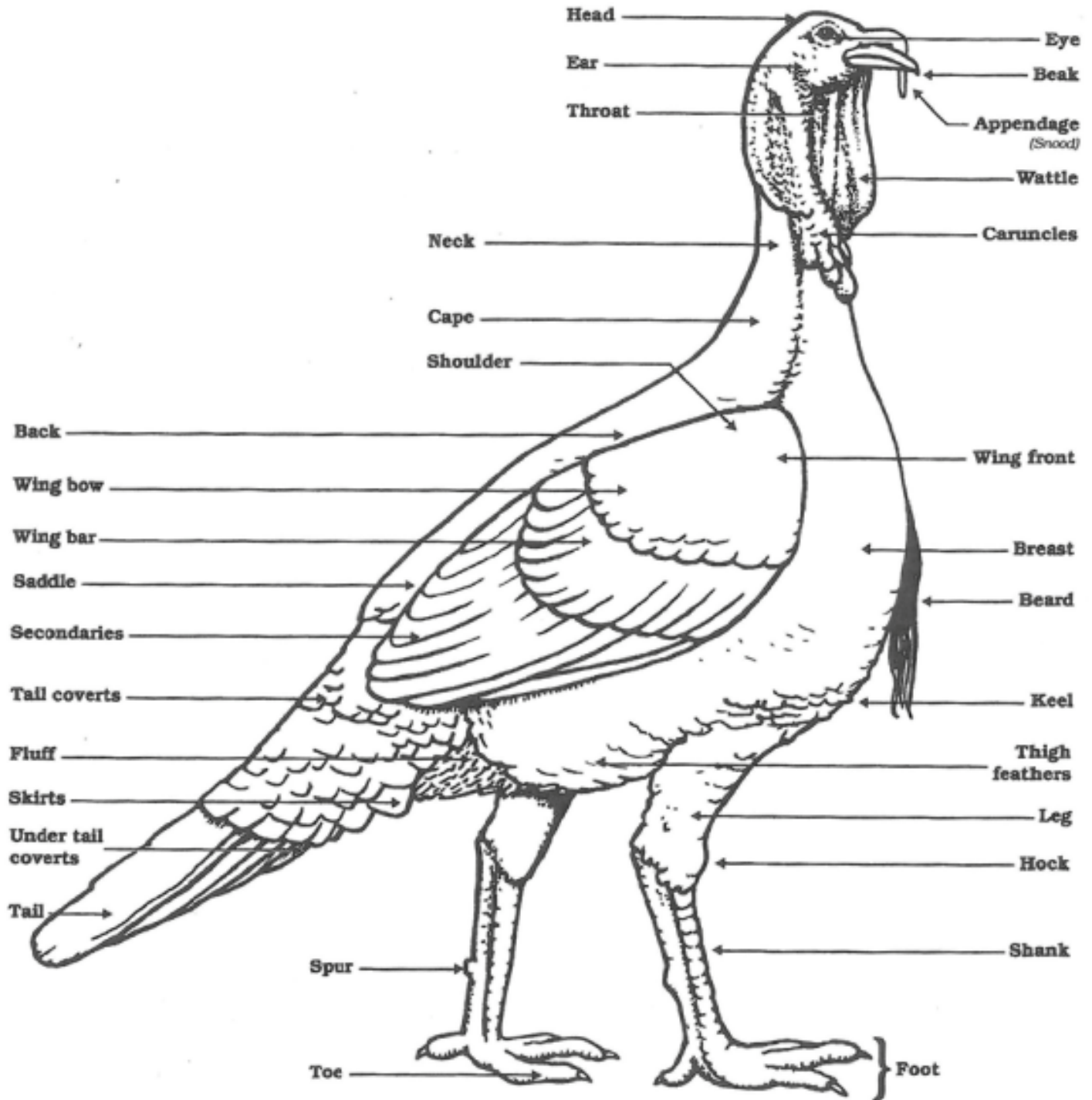
Please reference the chart below to use as a guideline on what to study for skill-a-thon this year. Additional handouts to study are included.

Junior (Ages 8-13) - Senior (Ages 14-19) - As of January 1st - This Year				
Species-Station	Projects	Station Topics		
TURKEY JUNIOR	150TE-TURKEY, EXHIBITION (FANCY) 150TM-TURKEY, MARKET	Station 1	Parts of a Turkey	Additional Handout
		Station 2	Diseases & Parasites in Poultry*	Additional Handout
		Station 3	Feed Tags	Additional Handout
TURKEY JUNIOR	150TE-TURKEY, EXHIBITION (FANCY) 150TM-TURKEY, MARKET	Station 1	Parts of a Turkey	Additional Handout
		Station 2	Diseases & Parasites in Poultry*	Additional Handout
		Station 3	Feed Tags	Additional Handout
*Diseases & Parasites in Poultry to Study:				
<b>Juniors</b> <ul style="list-style-type: none"> <li>• Avian Influenza</li> <li>• Bumblefoot</li> <li>• Botulism</li> <li>• Lice</li> <li>• Mites</li> </ul>		<b>Seniors</b> <ul style="list-style-type: none"> <li>• Avian Influenza</li> <li>• Coccidiosis</li> <li>• Fowl Cholera</li> <li>• Infectious Bronchitis</li> <li>• Cenal Worms</li> </ul>		

If you have any questions, please call the Belmont County Extension Office at (740) 695-1455.

POULTRY  
SKILL-A-THON

# Parts of a Turkey



## Diseases & Parasites in Poultry

### Junior

Disease or Parasite Name	Symptoms
Avian Influenza	Symptoms can include swelling of head, comb and eyelids, nasal discharge, coughing, diarrhea, sudden death. Can spread easily.
Bumblefoot	Swollen footpads, black or brown scabs on bottom of foot
Botulism	Weakness, limp neck, paralysis
Lice	Small insects with 6 legs that live along the shaft of the feather. Will lay eggs in clusters.
Mites	Very small insects, usually first around the vent, then spreading to the comb, wattle, and rest of bird. Transmitted bird to bird.

### Senior

Disease or Parasite Name	Symptoms
Avian Influenza	Symptoms can include swelling of head, comb and eyelids, nasal discharge, coughing, diarrhea, sudden death. Can spread easily.
Coccidiosis	Pale, Droopy Birds, Diarrhea, Bad Smell, Huddling. To reduce the risk of spreading the disease, keep bedding dry at all times.
Fowl Cholera	A bacterial disease transmitted through bird droppings and contaminated bedding, feed, or water. Causes swollen waddles, darken, of the head and unfeathered parts, difficulty breathing, and death.
Infectious Bronchitis	Respiratory distress like coughing & gasping.
Cecal Worms	Small white worms up to ½ inch, normally do not affect bird's health but are carriers of bacteria.

# POULTRY

## SKILL-A-THON

# Feed Tag

<b>Product Name</b>	➔	<b>TRUE-BLUE CHICK STARTER</b> Medicated Complete Crumbs for Chicks
<b>Purpose Statement</b>	➔	<b>True-blue Chick Starter</b> is formulated for the development of active immunity to Coccidiosis and for increased rate of weight gain and improved feed efficiency in replacement chickens.
<b>Active Ingredients</b>	➔	<b>ACTIVE INGREDIENTS</b>
		Amprolium ..... 113.5 g/ton Bacitracin Methylene Disalicylate ..... 10 g/ton
<b>Guaranteed Analysis</b>	➔	<b>GUARANTEED ANALYSIS</b>
		Crude Protein                   Min                   18.00% Lysine                            Min                   0.85% Methionine                    Min                   0.25% Crude Fat                        Min                   2.50% Crude Fiber                    Max                   7.00% Calcium                         Min                   0.75% Calcium                         Max                   1.25% Phosphorus                    Min                   0.70% Salt                                Min                   0.25% Salt                                Max                   0.75%
<b>List of Ingredients</b>	➔	<b>INGREDIENTS</b>
		Grain Products, Processed Grain By-Products, Plant Protein Products, dl-Methionine, Calcium Carbonate, Mono calcium Phosphate, Dicalcium Phosphate, Salt, Ferrous Carbonate, Ferrous Sulfate, Copper Sulfate, Manganous Oxide, Manganese Sulfate, Zinc Oxide, Zinc Sulfate, Cobalt Carbonate, Calcium Iodate, Sodium Selenite, Vitamin A supplement, Vitamin D3 supplement, Vitamin E Supplement, Menadione Sodium Bisulfite Complex, Menadione Dimethylprimidinol Bisulfite, Thiamine Mononitrate, Riboflavin Supplement, Niacin Supplement, Choline Chloride, Calcium Pantothenate, Pyridoxine Hydrochloride, Folic Acid, Biotin, Vitamin B12 Supplement.
<b>Directions for Use</b>	➔	<b>FEEDING DIRECTIONS</b>
		Feed <b>True-Blue Chick Starter-Medicated</b> continuously as the sole ration to chicks from 0 to 8 weeks. Provide fresh, clean water free choice at all times. <b>CAUTION:</b> Do not use amprolium in feeds containing bentonite <b>WARNING:</b> Use as the sole source of amprolium
<b>Warnings and Cautions</b>	➔	<b>WARNING:</b> Do not offer any feed that is spoiled, moldy, rodent-or insect-infested, or abnormal in appearance or odor, as it may cause illness or death <b>WARNING:</b> This product contains supplemental copper. DO NOT feed to sheep or other copper-sensitive species <b>IMPORTANT:</b> Feed is perishable. Store this product in a cool, dry area away from rodents and insects.
<b>Manufacturer</b>	➔	<b>TRUE-BLUE FEED COMPANY</b> Lexington, KY