

# 4-H Livestock Projects -

Livestock Project Selection .....	35
Livestock Project Evaluation Summary .....	36
Species Skill Station Topics.....	37-39
Beef .....	37
Dairy .....	37
Swine .....	37
Goat .....	38
Sheep .....	38
Horse .....	38
Poultry .....	39
Rabbit .....	39

# 4-H Livestock Projects -

## **1** *Project Selection*

### **BEEF**

117B Beef Breeding  
117BF Beef Feeder (Market)  
117DF Dairy Beef Feeder (Market)  
117M Market Beef

### **SWINE**

139 Market Hog  
140 Swine Breeding

### **DAIRY**

127CA Dairy Calf  
127HE Dairy Heifer  
127CO Dairy Cow

### **GOAT**

135BD Breeding - Dairy Goats  
135BM Breeding - Meat Goats  
135F Fiber Goats  
135H Harness Goats  
135M Market - Dairy, Meat, Cross Goats  
135PY Pymy Goats  
135C Companion - Pet Goat

### **POULTRY**

150CE Chicken, Exhibition (Fancy)  
150CM Chicken, Market (Broilers)  
150CEP Chicken, Egg Production: Hens and Pullets  
150DE Duck, Exhibition (Fancy)  
150DM Duck, Market  
150GE Goose, Exhibition (Fancy)  
150GM Goose, Market  
150TE Turkey, Exhibition (Fancy)  
150TM Turkey, Market  
150H Helmeted Guinea Fowl

### **HORSE**

174 Beginning Horse Management  
(Specific Activity Requirements-Based on Year Level)  
175 Light Horse Selection  
177 Horse Training: How to Talk to Your Horse  
180 Learning to Jump  
181 Draft Horse  
182 Small Equine  
184 Standardbred Horses  
185 Equine Reproduction and Genetics  
188 Trail Riding  
189 Dressage

### **SHEEP**

198 Market Lamb  
199 Sheep Breeding

### **RABBIT**

228BR Rabbit Breeding (Breeds of Rabbits)  
228MA Rabbit Market

# 4-H Livestock Projects -

2

## Project Evaluation

Did You Know?

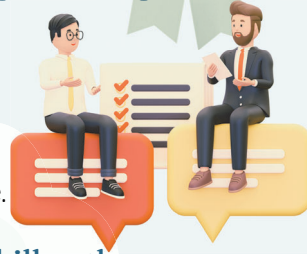
### Livestock Skill-a-thon

consists of:

- Interview (Species Specific)
- Skill Stations (Species Specific)
- Review of Project Record Books
- Review of Supplemental Records (If Any)

DO NOT BRING ANIMAL  
TO SKILL-A-THON!

This One-Day Event is Typically Held  
the First or Second Week of August --  
Check with the Extension Office or  
Your Club Advisor for This Year's Date.



**Members are required to participate in Livestock Skill-a-thon or Livestock Skill-a-thon Make-Up for ANY Livestock Animals wishing to be Eligible for Exhibit at the Belmont County Fair.**

Please Note:  
Exhibiting at the County Fair is not a  
requirement for 4-H Membership or Project  
Completion

3

## Livestock Skill-a-Thon (LSAT) Dress Code:

- Clothing must be FREE OF Inappropriate Logos, Slogans, Phrases & Pictures
- Skirt/Shorts Hems must go AT LEAST to extended fingertips
- Undergarments are to be HIDDEN from view
- Shoulder Straps must be AT LEAST 1" Wide
- Hats are for OUTSIDE only
- NO Bare Back or Stomach
- NO See Through Clothing
- NO Rips or Tears in Clothing
- NO Flip-Flops



### Ways to Complete a Project:

- Attend Livestock Skill-a-thon (LSAT)
  - Eligible for County Awards
- Attend Livestock Skill-a-thon Make-Up
  - INELIGIBLE for County Awards
  - Projects Exhibited in Club Booth will receive a Participation Ribbon Only
- Arrange Club Advisor Review
  - INELIGIBLE for County Awards
  - Projects Exhibited in Club Booth will receive a Participation Ribbon Only



### BEFORE YOU COME...

Project Record Book Requirements  
County LSAT Requirements\*



\*SKILL STATION TOPICS ARE POSTED ANNUALLY  
MAKE SURE YOU KNOW WHAT TO STUDY!

4

## Livestock Skill-a-Thon Requirements:

### Completed Project Records

- One Completed Project Book is Required Per Species--Additional Supplemental Records are acceptable for Multi-Project Books:  
Beef -- Dairy -- Goat -- Poultry -- Rabbit

### One Page Report

(If Not Included In Project Records)

# Livestock Skill Station Topics by Species

\*Indicates an Abbreviated List to Study-See Specific Species Packet

## BEEF

### Junior

Station 1

Medication Insert

Chapter 12  
Page 11

Station 2

Feet & Leg Structure

Chapter 2  
Page 12

Station 3

Feed Tags

Chapter 7  
Page 13

### Senior

Station 1

Beef Cattle Diseases\*

Chapter 5  
Pages 4-5

Station 2

Beef Retail Cuts

Color Photos  
(Back of Book)  
Page CP-15

Station 3

Feed Tags

Chapter 7  
Page 13

## DAIRY

### Junior

Station 1

Medication Insert

Chapter 13  
Page 160

Station 2

Feet & Leg Structure

Additional Handout

Station 3

Feed Tags

Chapter 13  
Page 161

### Senior

Station 1

Diseases in Dairy Cattle\*

Chapter 6  
Pages 85-90

Station 2

Mammary Structures  
(Side & Rear View)

Additional Handout

Station 3

Feed Tags

Chapter 13  
Page 161

## SWINE

### Junior

Station 1

Medication Insert

Chapter 24  
Page 12

Station 2

Wholesale Cuts of Meat

Chapter 5  
Page 1

Station 3

Feed Tags

Chapter 8  
Page 4

### Senior

Station 1

Ear Notching

Chapter 10  
Page 2

Station 2

Diseases\*

Chapter 9  
Pages 1-9

Station 3

Feed Tags

Chapter 8  
Page 4

# Livestock Skill Station Topics by Species

\*Indicates an Abbreviated List to Study-See Specific Species Packet

## GOAT

### Junior

Station 1

Feet & Leg Structure

Chapter 2  
Pages 24-25

Station 2

Hoof Trimming

Chapter 6  
Page 87

Station 3

Feed Tags

Chapter 5  
Page 59

### Senior

Station 1

Digestive System

Chapter 5  
Page 49

Station 2

Disease & Ailments\*

Chapter 6  
Pages 88-93

Station 3

Feed Tags

Chapter 5  
Page 59

## SHEEP

### Junior

Station 1

Leg Structure

Chapter 2  
Page 15

Station 2

Medication Insert

Chapter 13  
Page 142

Station 3

Feed Tags

Chapter 4  
Page 63

### Senior

Station 1

Determining Age

Chapter 2  
Page 19

Station 2

Retail Cuts of Lamb

Color Photo  
(Back of Book)  
Page 162

Station 3

Feed Tags

Chapter 4  
Page 63

## HORSE

### Junior

Station 1

Parts of the  
Western Saddle

Additional Handout

Station 2

Parts of Horse Hoof

Additional Handout

Station 3

Feed Tags

Additional Handout

### Senior

Station 1

Miscellaneous Health  
Conditions\*

Additional Handout

Station 2

Western Tack

Additional Handout

Station 3

Feed Tags

Additional Handout

# Livestock Skill Station Topics by Species

\*Indicates an Abbreviated List to Study-See Specific Species Packet

## CHICKEN

### Junior

Station 1

Parts of a Chicken  
(Cockerel/Roster)

Additional Handout

Station 2

Medication Label

Additional Handout

Station 3

Feed Tags

Additional Handout

### Senior

Station 1

Parts of a Chicken  
(Hen)

Additional Handout

Station 2

Identifying Comb  
Types in Poultry

Additional Handout

Station 3

Feed Tags

Additional Handout

## DUCK GOOSE GUINEA FOWL TURKEY

### Junior

Station 1

Parts of a Duck, Goose,  
Turkey or Guinea Fowl

Additional Handout

Station 2

Diseases & Parasites  
in Poultry\*

Additional Handout

Station 3

Feed Tags

Additional Handout

### Senior

Station 1

Parts of a Duck, Goose,  
Turkey or Guinea Fowl

Additional Handout

Station 2

Diseases & Parasites  
in Poultry\*

Additional Handout

Station 3

Feed Tags

Additional Handout

## RABBIT

### Junior

Station 1

Conformation  
Body Types

Chapter 3  
Pages 28-29

Station 2

Anatomy-Parts

Chapter 3  
Page 27

Station 3

Feed Tags

Chapter 6  
Page 51

### Senior

Station 1

Diseases and Health  
Conditions\*

Chapter 7  
Pages 56-62

Station 2

Conformation  
Body Types

Chapter 3  
Pages 28-29

Station 3

Feed Tags

Chapter 6  
Page 51